

## Tutorial 5: Add-to-Cart Button

### Objectives:

Your goal in this tutorial is to be able to:

- locate and display the NetStores icons in Dreamweaver
- properly use NetStores Add-to-Cart object in Dreamweaver
- enter the correct product code in the drop-down window to correspond with the item on your Web page
- customize the Add-to-Cart links using your own phrasing
- customize the Add-to-Cart links using the Add-to-Cart Icon provided by NetStores or using your own icon or picture
- view, test and debug your Add-to-Cart links or buttons

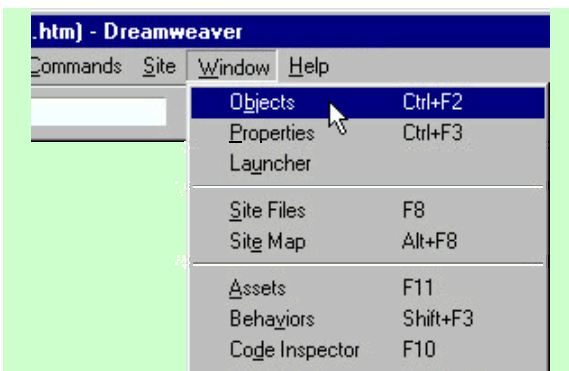
Adding NetStores cart and search features in Dreamweaver is simple but powerful, converting your Web site from pages to a store. Tutorials 5 – 8 teach you how to insert each NetStores icon in the Dreamweaver Objects Panel and how to modify it to suit your needs. The tutorials start by adding shopping cart features, then search and form features.

In your Web site, wherever you have an item or service for sale, your customers will want to be able to select the item for purchase. Here you use the add-to-cart feature. When a customer clicks an add-to-cart button or link, NetStores adds the object or service the customer is viewing to the shopping cart and shows them a list of shopping-cart items. That is, NetStores records that the customer has selected the item for purchase and shows the customer a list with this and previously selected items.

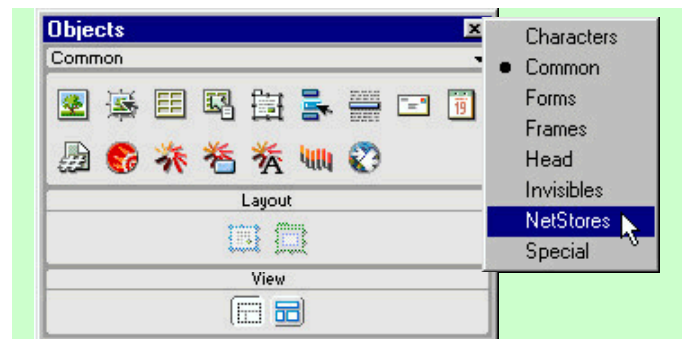
### Locate and Display the NetStores Objects in Dreamweaver

When you want to use NetStores objects (Tutorials 5 – 8) in Dreamweaver, you need to display them by following these instructions:

- Start Dreamweaver.
- If the Dreamweaver Objects panel is not currently visible, click *Window > Objects* (Fig. 5.1).
- Click the drop-down list arrow and select the NetStores category in the objects panel (Fig. 5.2).



**Figure 5.1** If necessary, open Dreamweaver's Objects panel by clicking *Window > Objects*.



**Figure 5.2** Dreamweaver Objects panel. Click the drop-down list arrow in the Dreamweaver Objects panel and select the NetStores category in Dreamweaver's Objects panel.

- The NetStores objects panel will then open (Fig. 5.3).

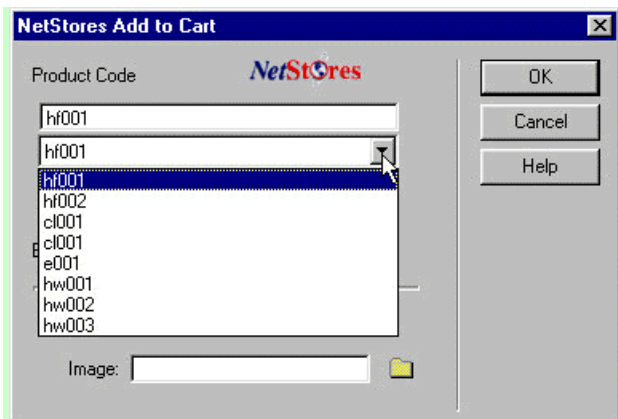
### Insert a Default Add-to-Cart Button

Within your Web site, you need instant purchase links in the form of add-to-cart buttons or pictures. Follow the instructions below to put add-to-cart buttons in appropriate places in your site:

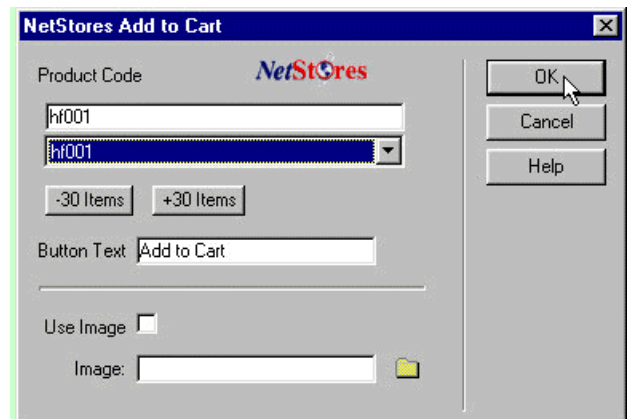
- Open a page needing add-to-cart buttons from the local folder with your company's Web pages.
- Place the cursor where you want to insert an instant purchase button.
- Click the NetStores Add-to-Cart icon (Fig. 5.3).
- Select the correct *Product Code* from the drop-down list (Fig. 5.4).



**Figure 5.3** NetStores Objects panel. Click the *Add-to-Cart* icon in the Objects panel to insert an add-to-cart button.



**Figure 5.4** Select the correct *Product Code* from the drop-down list; in this example it is “hf001”, which corresponds to a lamp with a yellow shade.



**Figure 5.5** Use the default Button Text, *Add to Cart*, and click **OK**. (Note, for a store with more than 30 items, use the -30 Items or +30 Items buttons to locate the correct product code.)

- In situations in which you have more than 30 items in the item file you might need to click +30 items or -30 items to access the correct product code (Fig. 5.5).

You have three basic options for the appearance of the instant purchase link. It can simply be a button with the text "Add to Cart" on it. This is the default. You can change the button label to use different text, or you can use an image. With an image, the possibilities are endless.

To use the default add-to-cart button follow these instructions:

- Use the default name (*Add to Cart*) for the Text Button (Fig. 5.5).
- Click **OK** (Fig. 5.5).
- Figure 5.6 shows the button added to a page in Dreamweaver.
- Save your Dreamweaver file.



**Figure 5.6** In our example, the Confetti Store, we inserted an add-to-cart button with the product code matching the lamp.

When you select a product code, you tie the particular product or item to the button so that NetStores knows which item to look up in the item file. NetStores can then add the item, its description, price, and other pertinent information to the shopping cart.

If you do not see product codes listed in the drop-down window (Fig. 5.4), perform the steps at the end of Tutorial 3 to select the item file and *Update Store Properties* (Fig 3.26), to be able to use the NetStores objects correctly.

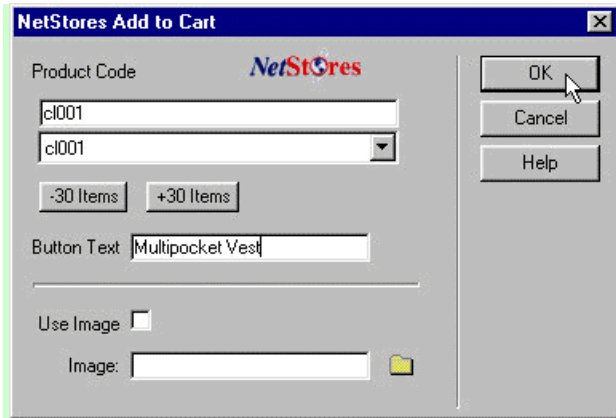
### **Change the Text on the Add-to-Cart Button**

You can change the text on the NetStores add-to-cart button to meet your needs. Follow the instructions below to add a button with your own text:

- Place the cursor in a reasonable location on your Web page to add a button for an item.
- Click the NetStores Add-to-Cart icon (Fig. 5.3).
- Select the correct item code from the list.

Change the Button Text to use your own phrasing. In the example (Fig. 5.7) we use the phrase, "Multipocket Vest."

- Click **OK** (Fig. 5.7).
- Figure 5.8 shows the resulting button as seen within Dreamweaver.
- Save your Dreamweaver file.



**Figure 5.7** In this example we insert the multipocket vest at the Confetti Store and change the *Button Text* to "Multipocket Vest".



**Figure 5.8** Example button with different text. We changed the *Button Text* to "Multipocket Vest".

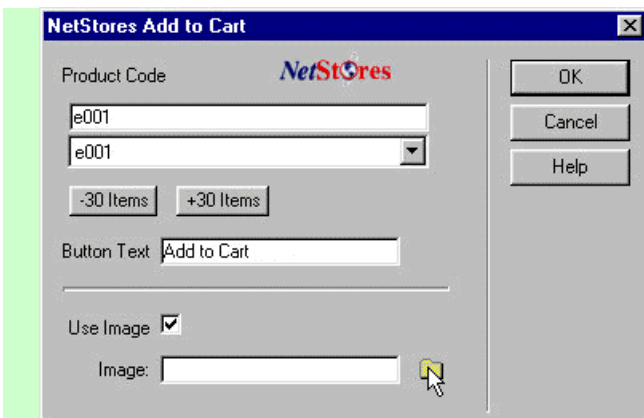
### Use the NetStores Add-to-Cart Icon or Your Own Image

If you prefer an image instead of a text button, you can change the add-to-cart button by following these instructions:

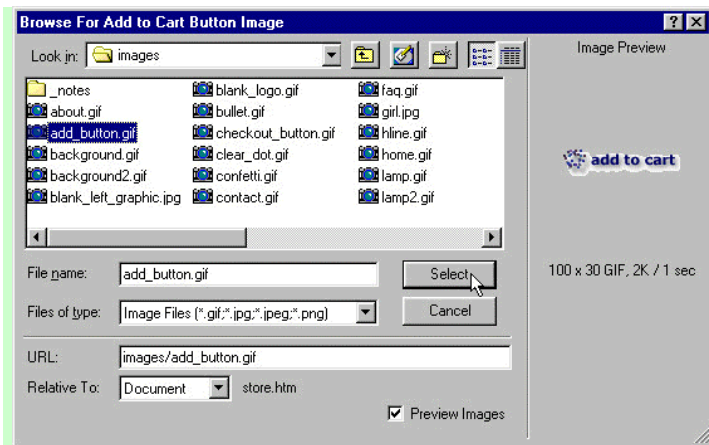
- Place the cursor in your Web page where you would like to insert an add-to-cart button.
- Click the NetStores Add-to-Cart icon in the *Objects* panel (Fig. 5.3).
- Select the correct item code from the list.
- Click the *Use Image* check box (Fig. 5.9).
- Click the folder button (Fig. 5.9) and browse for the image file you want to use for the add-to-cart button (Fig. 5.10).
- **Select** the file (Fig. 5.10). This places the correct image file name and necessary paths in the *Image:* text box in the *NetStores Add-to-Cart* dialog box (Fig. 5.11).

You can use the NetStores provided image *AddtoCart.gif* in the icons subfolder of the images folder. It looks like the Add-to-Cart Icon in the Objects panel. If you do not have the icons in the correct location, follow the steps in *Copy the NetStores Icons* in Tutorial 1. As another option, you can use your own image as shown in Figure 5.10.

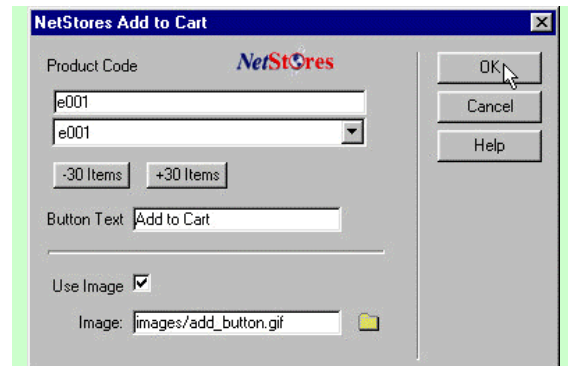
- Click **OK** (Fig. 5.11).



**Figure 5.9** Click the *Use Image* check box; then click the folder button.

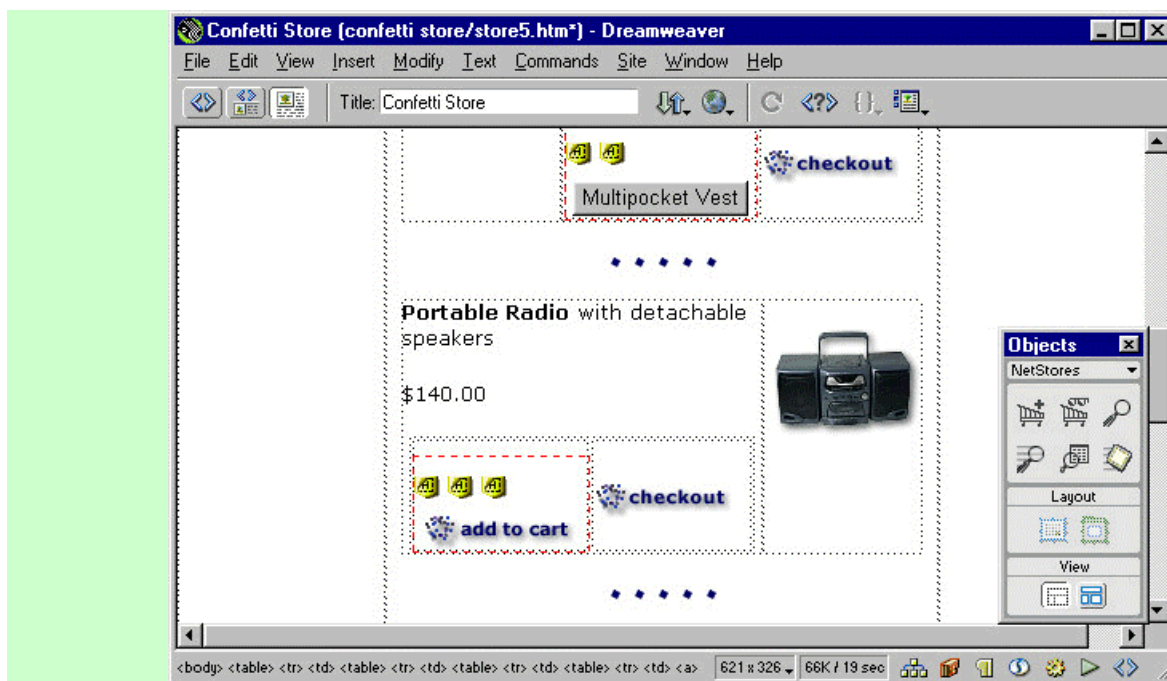


**Figure 5.10** Select the image file you want to use for the add-to-cart button.



**Figure 5.11** After selecting the image file, click OK.

- The border of the form containing the add-to-cart object is visible in Dreamweaver as a dashed red line (Fig. 5.12).
- Save your Dreamweaver file.



**Figure 5.12** The form containing the add-to-cart object is shown here for the portable radio in the Confetti Store.

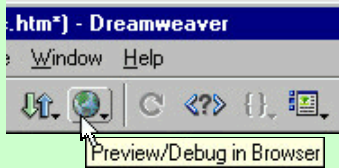
NetStores will remember your last settings in the Add-to-Cart dialog box so you can easily add more buttons with the same settings.

### Preview Your Changes

To preview your new buttons follow these directions:

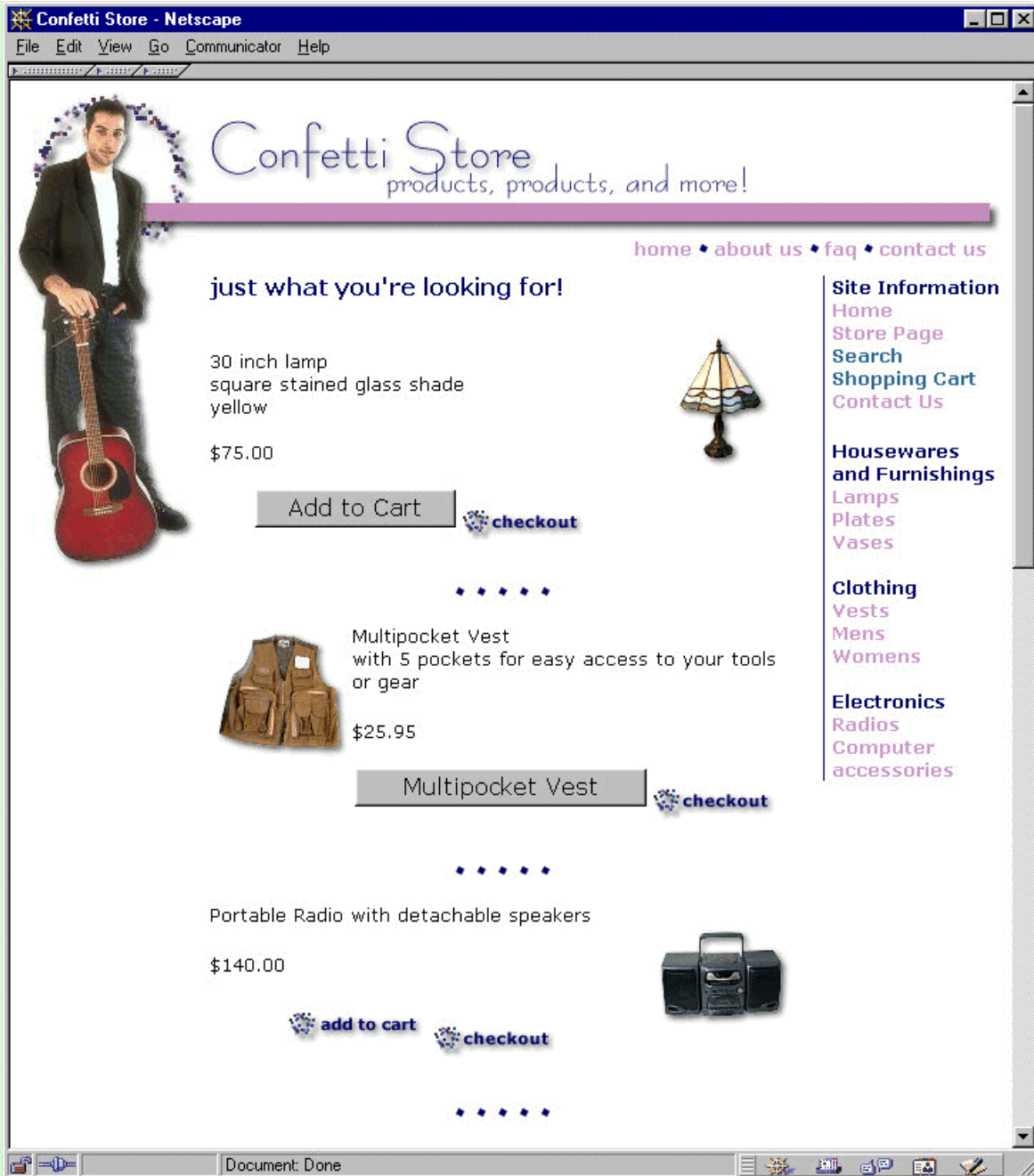
- Click Dreamweaver's *Preview/Debug in Browser* button (Fig. 5.13), selecting *preview in ...* from the drop-down list to test the Web page.





**Figure 5.13** Click Dreamweaver's *Preview/Debug in Browser* button and then select *preview in....*

- Our example Confetti Store page looks like Figure 5.14 after we completed the previous steps.
- Check each new button you added and examine the results.



**Figure 5.14** This is how our example store page looks after completing the tutorial.

- Each time you click an add-to-cart button or image the item should be added to the shopping cart displayed in the NetStores Order Recap Form. Figure 5.15 shows the results after clicking each Add-to-Cart button in our example Web page.

## Changing a Button or Image

If you want to change a button, edit your page by completely deleting the button and all associated tags. For example, you should delete the entire form that was added by the Add-to-Cart object, the red dashed box in Figure 5.6 or 5.12. Then insert it again using the instructions above.

After finishing this tutorial you should know how to add three different kinds of add-to-cart buttons to your Web page (similar to those shown in Fig. 5.14): one with the default words *Add to Cart*, one with a different label, and one with an image instead of an input button. Each add-to-cart button or image is allied with one item and adds the item to the shopping cart list. When one of these buttons or images is clicked, NetStores displays the *Order Recap Form* (or shopping cart) with the item added (Fig. 5.15).

The Confetti Store Order Recap Form - Netscape

File Edit View Go Communicator Help

Confetti Store  
products, products, and more!

### Order Recap Form

Qty	Code	Name	Description	Category	Price	Extended
1	c1001	<a href="#">brown multipocket vest</a>	"vest with 5 pockets, brown"	clothing vests	\$25.95	\$25.95
1	e001	<a href="#">portable radio</a>	portable radio with detachable speakers	electronics radios	\$140.00	\$140.00
1	hf001	<a href="#">yellow stained glass lamp</a>	"lamp, square stained glass shade, yellow"	home furnishings lamps	\$75.00	\$75.00
3			Order Amount			\$240.95

Order Options

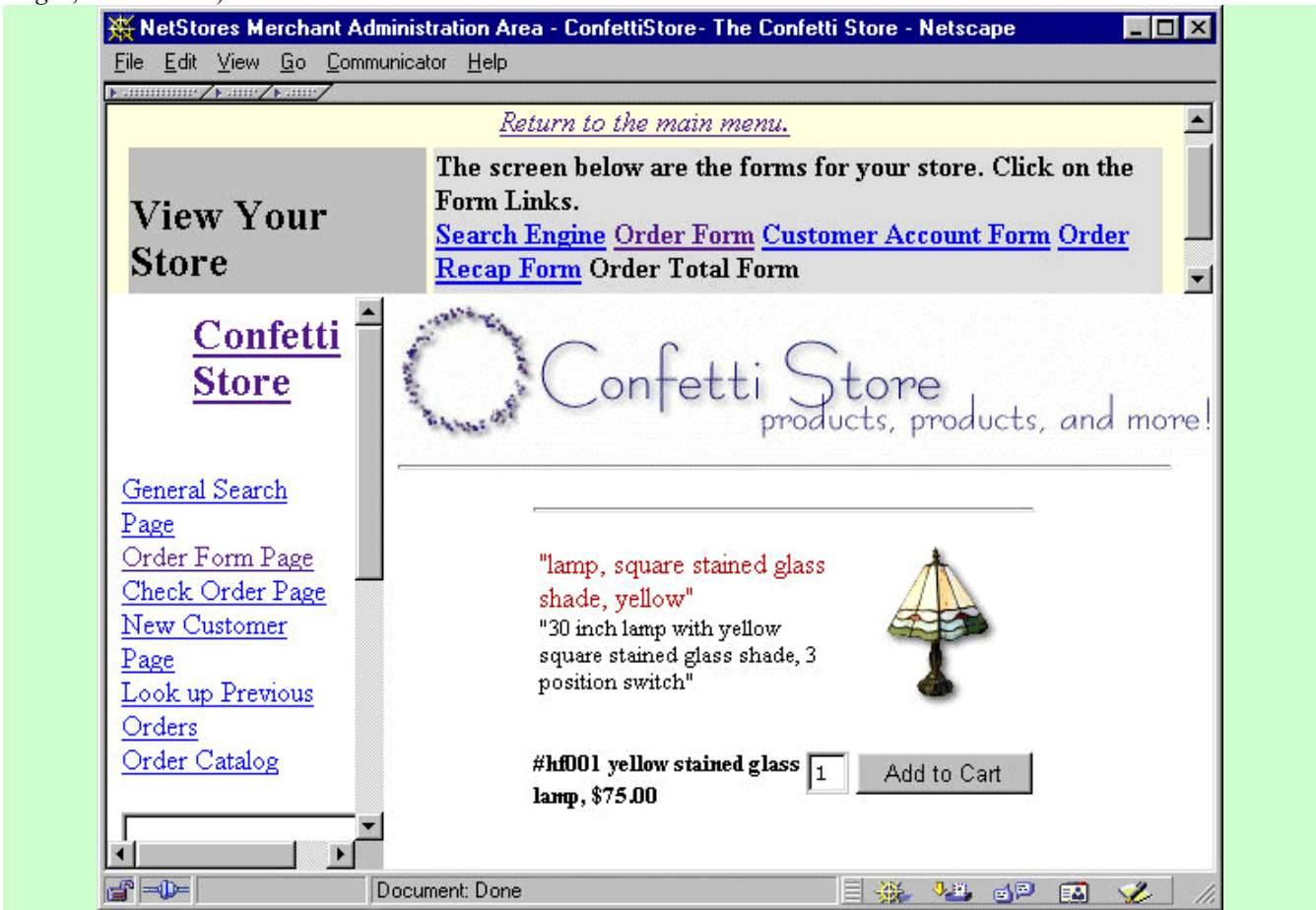
Clear Modify Checkout

Electronic Commerce Services:  
NetStores Version 3.4, Revised 1-9-02  
By: NetStores E-Commerce Solution,  
Copyright 1995-2002

Document: Done

**Figure 5.15** The *Order Recap Form* displays the contents of the shopping cart. In this example, the form reveals items selected on the Confetti Store page (Fig. 5.14).

Clicking a product link within the Order Recap Form takes you to a NetStores generated page such as shown in Figure 5.16, unless you have set up the links to go to product pages you created (see the section, *Use Links to Your Own Product Pages*, in Tutorial 4).



**Figure 5.16** Clicking a link on the Order Form Page in the *Code* or *Name* column (Fig. 5.15) leads to a dynamic product page like this one.