

Tutorial 1: Installation

Objectives:

Your goal in this tutorial is to be able to:

- download NetStores extensions for attachment to Dreamweaver
- install the extensions using the Dreamweaver Extension Manager
- open the NetStores objects panel
- open an existing site or create a new site in Dreamweaver
- copy the NetStores icons to your own Web site folder

The NetStores Web site has downloadable extensions for e-commerce in Dreamweaver. By following the steps in this tutorial, you will be able to download and install these extensions so that you can add e-commerce to your Web site.

Download NetStores Extensions for Attachment to Dreamweaver

Follow the instructions below to download the NetStores extensions for Dreamweaver:

- In your Internet browser, open NetStores at <http://www.netstores.com/>.
- In the yellow frame at the left side of the page, locate and click the Dreamweaver link that is appropriate for your version of Dreamweaver (Fig. 1.1).
- Select the download button appropriate for your platform, either **Download - Macintosh PPC** or **Download - Windows 95/98/NT/2000** (Fig. 1.2a).
- Fill out the registration form (Fig. 1.2b).
- Click **Continue** at the bottom of the form. This will bring you back to the screen in Figure 1.2a.



Figure 1.1 Locate and click the Dreamweaver link in the yellow frame that is appropriate for your version of Dreamweaver.

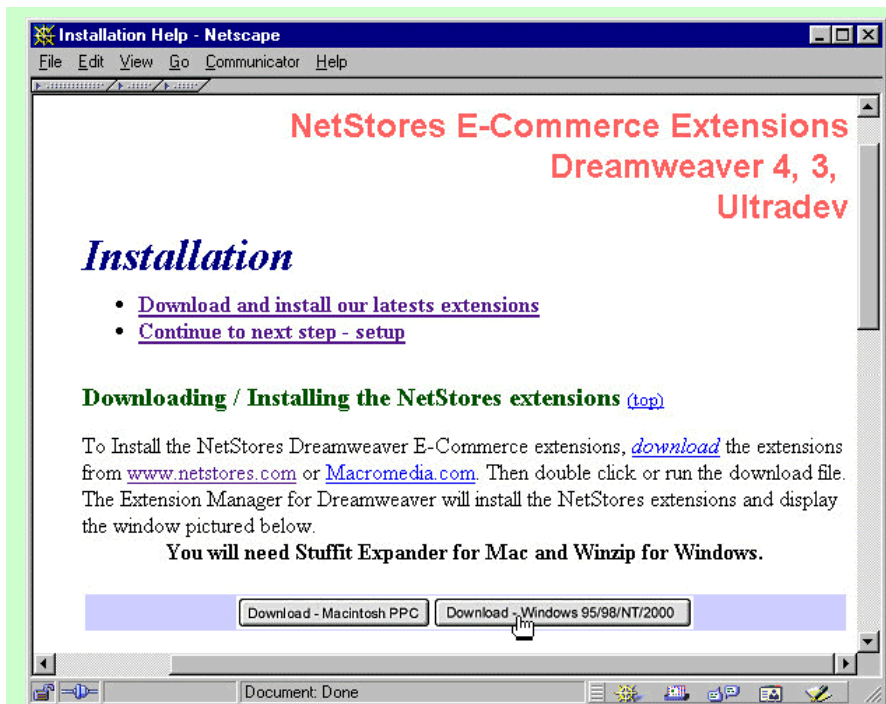


Figure 1.2 a. Select the download button appropriate for your platform.

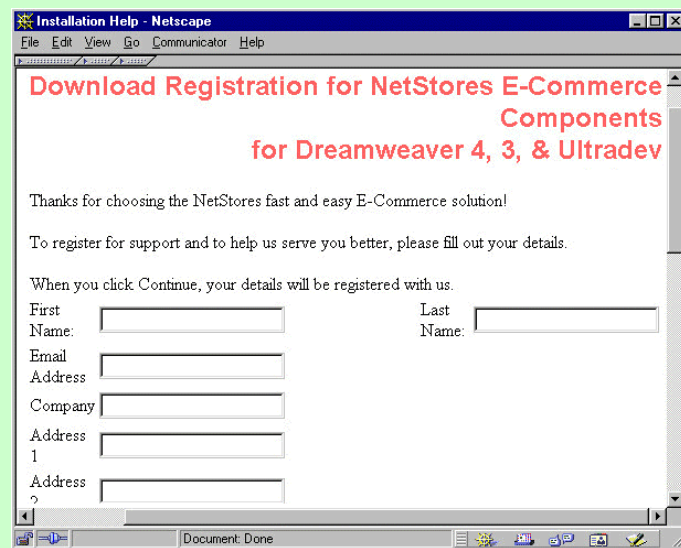


Figure 1.2 continued. b. Download Registration form.

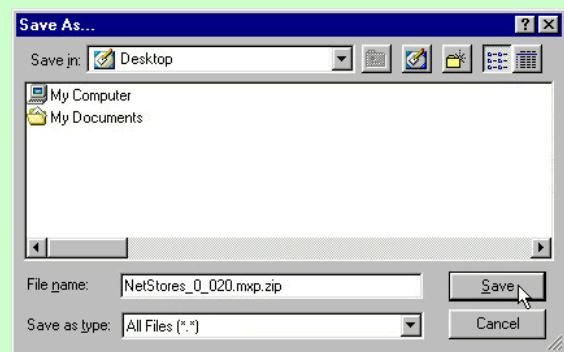


Figure 1.3 Save the file to your desktop.

- Again, select the download button appropriate for your platform, either **Download - Macintosh PPC** or **Download - Windows 95/98/NT/2000** (Fig. 1.2a).
- **Save** the file to your desktop (Fig. 1.3) or in an appropriate folder. Remember where you saved it.
- Run Winzip or other unzipping application to unzip the file. Notice where you unzipped it.

Install the Extensions Using the Dreamweaver Extension Manager

To install the NetStores E-Commerce extensions for Dreamweaver follow these instructions:

- Locate and double click the icon of the file you unzipped (Fig. 1.4).
- Read the whole disclaimer agreement scrolling down as needed. If you accept the terms, click the **Accept** button (Fig. 1.5).



Figure 1.4 Locate and double click the icon of the file you downloaded from NetStores.

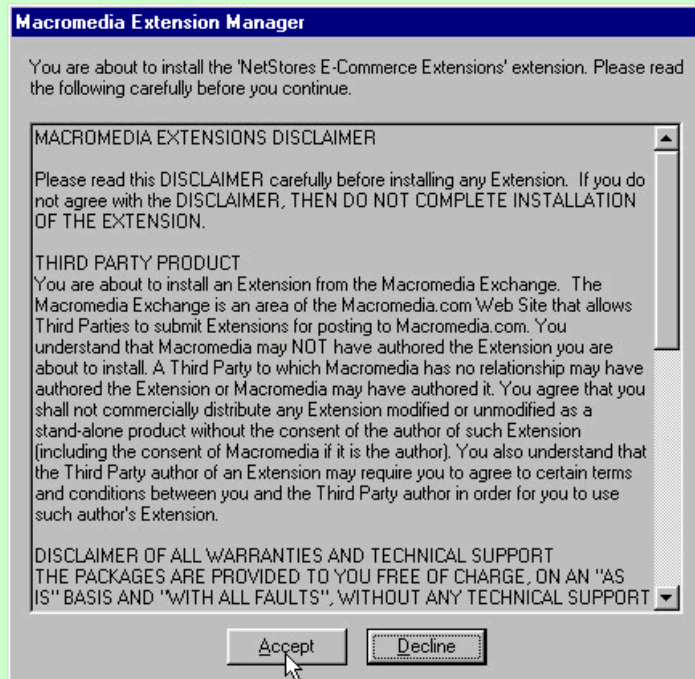


Figure 1.5 Read the whole disclaimer agreement scrolling down as needed. If you agree to the terms, click the **Accept** button.

- When installation is complete, click **OK** (Fig. 1.6).
- This procedure starts the Dreamweaver Extension Manager and automatically installs the NetStores extensions (Fig. 1.7).
- When installation is complete, close the Extension Manager.
- If you have Dreamweaver open during the installation, you will need to close and restart it for the changes to take effect.

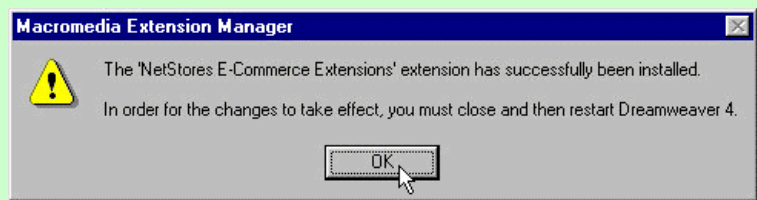


Figure 1.6 When installation is complete, click OK.

Open the NetStores Objects Panel

To confirm that the NetStores extensions have been installed, follow these instructions:

- Open Dreamweaver
- Locate and select the **NetStores** category in the Dreamweaver's Objects panel, as shown in Figure 1.8. If the Objects panel is not visible, first choose **Window > Objects**, then select **NetStores** (Fig. 1.8).
- You should now see the NetStores icons in the Objects panel (Fig. 1.9).

Congratulations if you completed each step, you have now installed your NetStores extensions.

Open an Existing Dreamweaver Site

Each Web store should have its own site. Later when you sign up with NetStores, Dreamweaver will save your store settings. You will want these saved

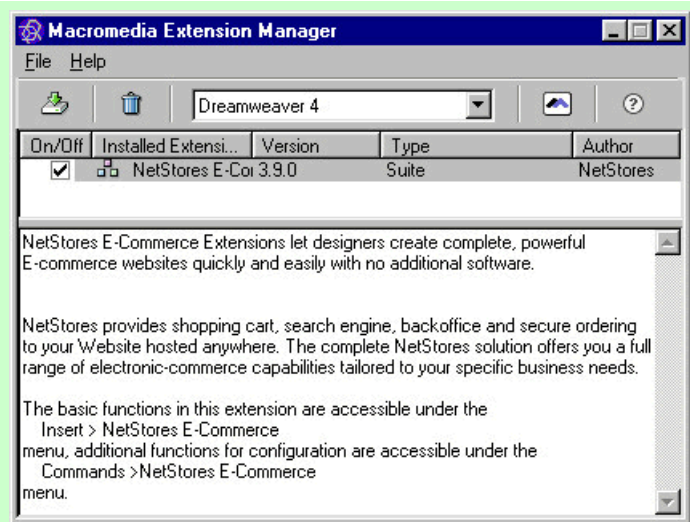


Figure 1.7 The Dreamweaver Extension Manager automatically installs the NetStores extensions.

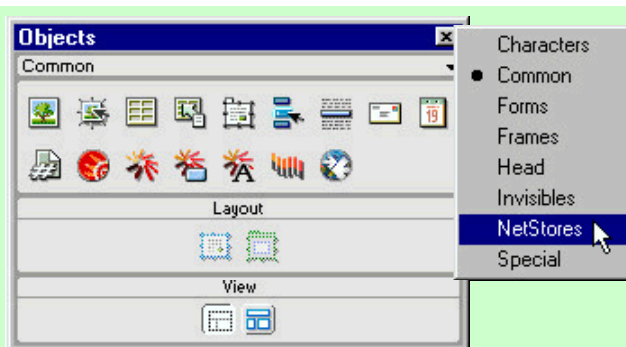


Figure 1.8 To display the NetStores objects, select **NetStores** from the drop-down menu in Dreamweaver's Objects panel.



Figure 1.9 After selecting *NetStores*, the NetStores objects are visible in the Objects panel.

in the same folder as your local Web pages. You probably already have a site defined in Dreamweaver associated with your store's Web pages. If you do not, skip to the next section and open a new site. If you do have a site already defined, follow these instructions to open it:

- In Dreamweaver, open an existing site by selecting **Site > Open Site >** and selecting the correct site name (Fig. 1.10).

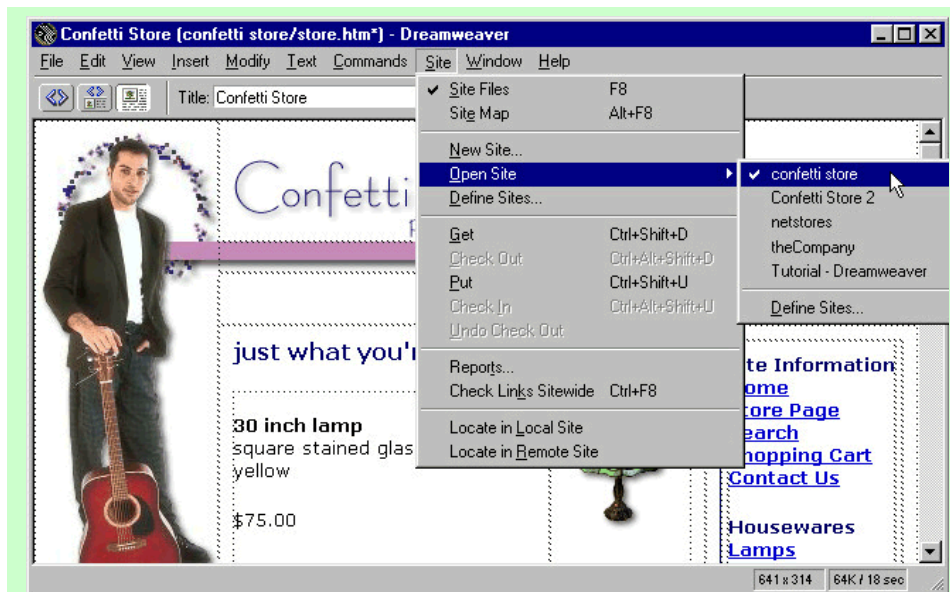


Figure 1.10 Open an existing site by selecting **Site > Open Site** and then select the correct site name.

Define a New Site in Dreamweaver

If you do not already have a site for the Web pages to which you plan add e-commerce, define a new site in Dreamweaver by following the instructions below:

- In Dreamweaver, define a new site by selecting **Site > Define Sites...** (Fig. 1.11).
- Click **New...** or **Duplicate...** to make a new site (Fig. 1.12).

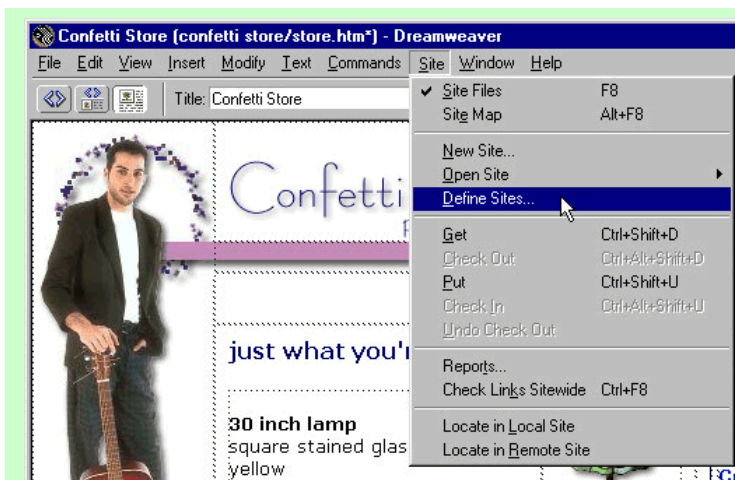


Figure 1.11 Define a new site by selecting **Site > Define Sites...**

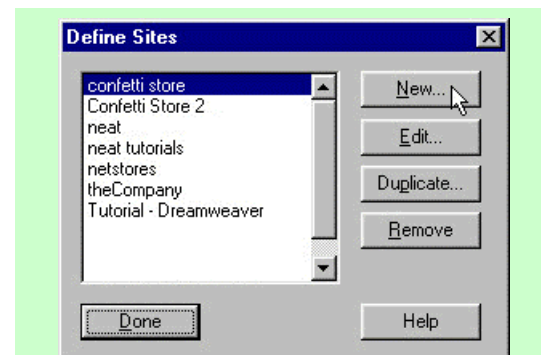
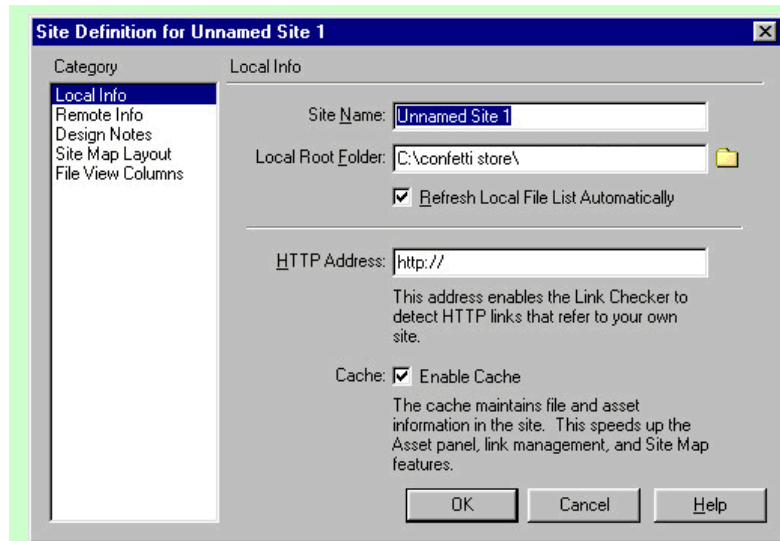


Figure 1.12 Click **New...** or **Duplicate...** to make a new site.

- Type in an appropriate *Site Name* (Fig. 1.13).
- Fill in the *Site Definition* dialog box *Local Info* with appropriate information (Fig. 1.13). You can also set up other aspects of the site at this time, such as the *Remote Info*, or edit the site later.
- Click OK (Fig. 1.13).

Figure 1.13 Type in an appropriate *Site Name* and fill in the rest of the *Site Definition* dialog box *Local Info* with appropriate information.



Copy the NetStores Icons

Some companies prefer to use the NetStores icons for the cart and search extensions on their Web sites. If you might want to use them, follow the instructions below so you will have the icons available for use on your Web site:

- Open the folder *C:\Program Files\Macromedia\Dreamweaver 4\Configuration\Help\Netstores\Images\icons* where you will find a folder called *icons* with the icon image files (Fig. 1.14). If you are using an earlier version of Dreamweaver, substitute the version number for 4 in the path. If you installed Dreamweaver in a different directory, locate that directory, then open the *Configuration\Help\Netstores\Images\icons*.
- Select and copy the *icons* folder (Fig. 1.14).
- **Paste** the *icons* folder in your company's local Web site folder, where you keep your other image files. Remember where you pasted it (Fig. 1.15).
- If you plan to use these icon images you will need to upload them to your company's Web site as well.

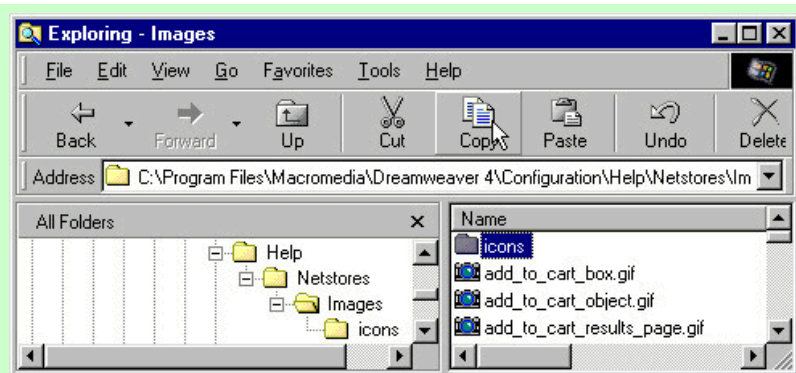


Figure 1.14 Select and Copy the *icons* folder.



Figure 1.15 Paste the *icon* folder in your company's local Web site folder, where you keep your other image files. Remember where you pasted it.

You now have the necessary NetStores images ready for use on your Web site.

In the process of completing this tutorial, you downloaded and installed the NetStores e-commerce extensions to use with Dreamweaver. You opened the NetStores objects panel in Dreamweaver to confirm that the extensions were properly installed. You opened an existing Dreamweaver site or created a new one. Finally, you copied the NetStores icons so you could use them on your Web site.